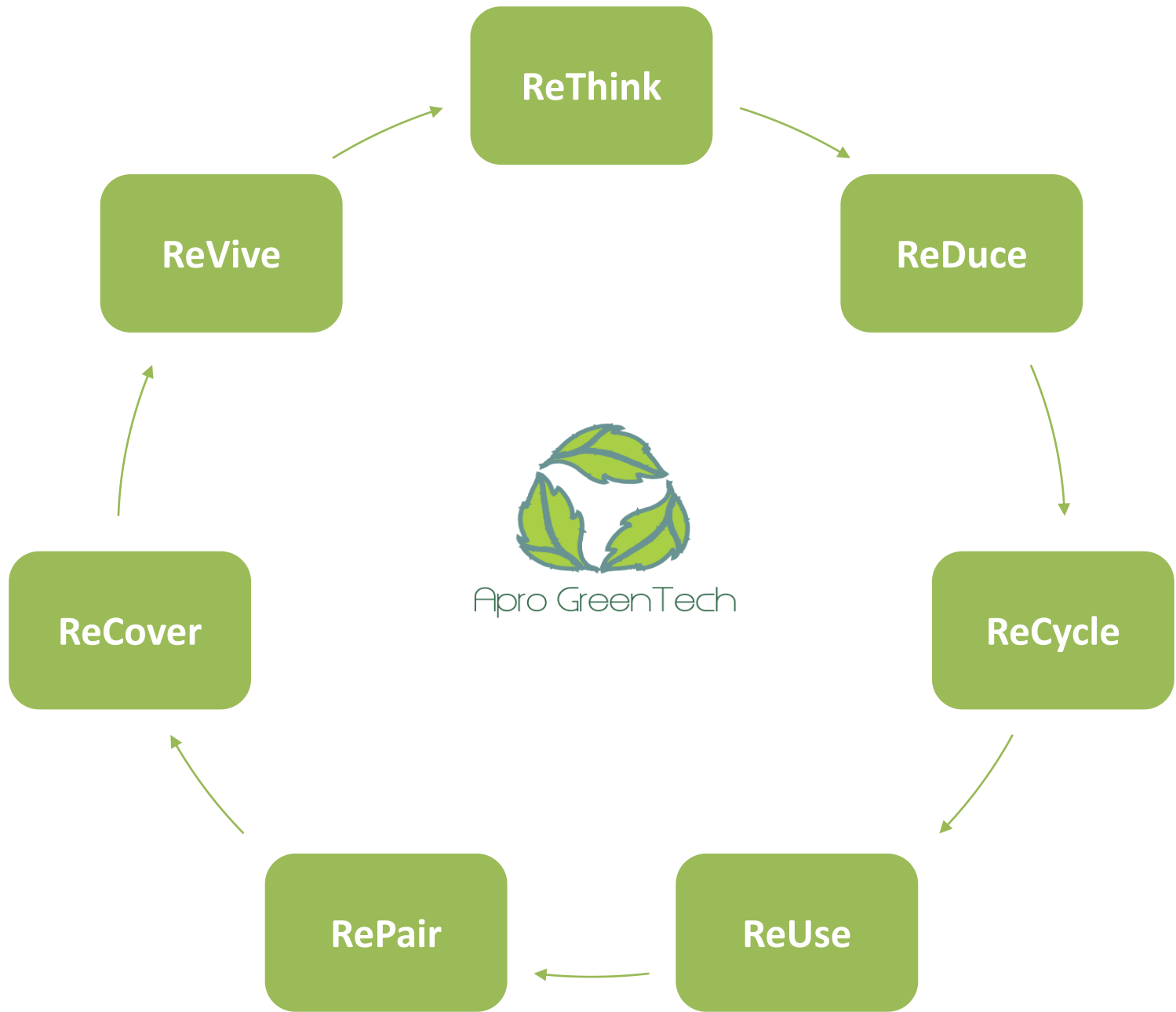




Apró GreenTech

“Greening the Impossible”

- doing what others thought impossible



Who we are

Apro Greentech offers comprehensive solutions for environmental enhancement, staying true to our motto, "Greening the Impossible." At Apro Greentech, we provide a range of products and services to address various aspects, including:

- Developing sustainable energy strategies through our innovative solar trees, solar charging stations, and wind-solar hybrid systems.
- Efficiently managing different types of waste, encompassing dry, wet, and glass waste recycling.
- Implementing intelligent rainwater harvesting techniques and offering solutions for the maintenance of lakes and water channels.
- Mitigating pollution with our cutting-edge dust control machines.
- Contributing to eco-friendly construction, as evidenced by our low-cost housing projects using waste pet bottles and fly ash, and the creation of e-toilets from recycled milk cartons.

Continuously exploring novel, eco-conscious approaches for a greener future, we are committed to countering the escalating impacts of climate change and global warming. Our team actively participates in our country's Climate Action Plan. Furthermore, we collaborate with local innovators from diverse regions in India to pioneer greener solutions and contribute to the climate action agenda.



Apro GreenTech

Our Green Approach

Renewable Energy Solutions

Solar Trees: These are vertically designed, aesthetically pleasing structures that efficiently capture solar energy. In line with a recent article in which Prime Minister Narendra Modi emphasized the growing demand for energy, the concept of solar trees is gaining prominence as a solution to provide solar energy access everywhere. (*Note: You can insert the relevant article ahead for reference.)

Onsite Solar Power Plants: These solar power installations can be situated on rooftops, ground mounts, or as carport installations, providing an immediate and localized source of solar energy.

Open Access Solar Power: This involves the consumption of solar power from the grid, allowing for broader access to renewable energy sources.

Group Captive: This involves collective investment in a solar power plant, enabling multiple entities to benefit from and contribute to the generation of solar energy.

Wind Energy: Another sustainable energy source that harnesses the power of wind to generate electricity.



A solar tree is an innovative concept that seamlessly blends the aesthetics of a traditional tree with advanced solar energy technology. Typically, it features a vertical pole resembling a tree trunk, adorned with solar panels arranged in a canopy-like structure that mimics the branches and leaves of a real tree. These solar panels capture sunlight and convert it into electricity, offering a versatile energy source for various applications. Solar trees are available in a range of products with capacities spanning from 1kV to 20kV. Our intelligent solar tree models can be enhanced with features like Wi-Fi integration, CCTV cameras, weather monitoring systems, pollution monitoring systems, charging stations, green advertising capabilities, and sun tracking systems.

Key Characteristics:

Design and Structure: Solar trees are thoughtfully designed to be both visually appealing and highly functional. The arrangement of solar panels on multiple branches maximizes the surface area exposed to sunlight, thereby enhancing their energy generation efficiency.

Versatility: Solar trees can be installed in diverse settings, including parks, public spaces, parking lots, and sidewalks. They not only provide shade but also generate clean and sustainable energy.

Charging Stations: Many solar tree models are equipped with USB charging ports, electric outlets, and wireless charging pads. This makes them convenient locations for people to charge their electronic devices, such as smartphones and laptops, while enjoying the outdoors.

Integration with Infrastructure: Solar trees can be seamlessly integrated into smart city infrastructure, offering eco-friendly energy solutions in urban environments and enhancing the overall sustainability of these areas.

Energy Storage: Some solar tree installations feature energy storage solutions, typically in the form of batteries. This allows excess energy generated during peak sunlight hours to be stored for later use during cloudy periods or at night, ensuring a continuous and reliable energy supply.



New Delhi: Prime Minister Narendra Modi addresses a post-Budget webinar on 'Energy for Sustainable Growth' Friday (PTI)

Prime Minister Narendra Modi [OPEN IN APP](#)
urged households to set up solar trees to meet the increasing energy demand of India, and contribute to saving up to 15 per cent electricity for every house.

Addressing a post-budget webinar on 'Energy for Sustainable Growth' he also said that four pilot projects for coal gasification and conversion of coal into chemicals required for the industry will be set up to evolve the technical and financial viability of transitioning to renewable energy.

PM Modi said, "With the coming years, India's energy demands will increase, therefore, we must transition to renewable energy."

"Every household should develop its own solar tree that can contribute to saving up to 15 per cent electricity of that [OPEN IN APP](#) will not only be unique but will be environment-friendly," he added.

<https://www.livemint.com/news/india/pm-modi-urges-households-to-set-up-solar-trees-to-meet-rising-energy-demand-11646376782457.html>



Anjo Greentech



Powering all boundary
lights for Bank Of Baroda
With Solar Tree



Apro GreenTech



India's Biggest Solar Tree
Workstation With Wifi &
Charging stations.



Powering INDIAN ARMY campus with our Solar Tree.



Powering Indian Railway With Our Solar Tree



Solar Street Lamps :
Solar lighting systems will pay for itself in only about 2 years.

Apro GreenTech Solar photovoltaic panels are durable and do not require much maintenance, once in while cleaning of solar cell modules will be it.

Average lifetime of solar power panels are 25 years, which justify the initial cost of solar panel. Motion sensor led lights save power





Apro GreenTech



SOLAR CHARGING STATION

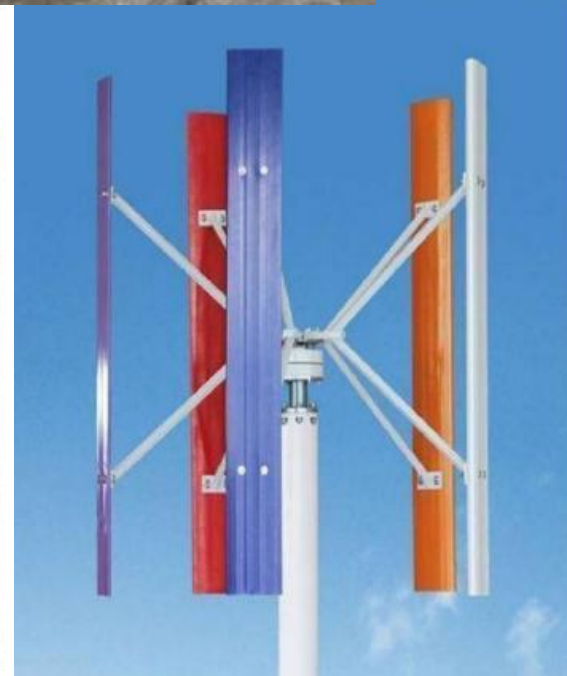


SOLAR CHARGING STATIONS

APRO GREEN SOLAR CHARGING ON HIGHWAY



Wind Energy

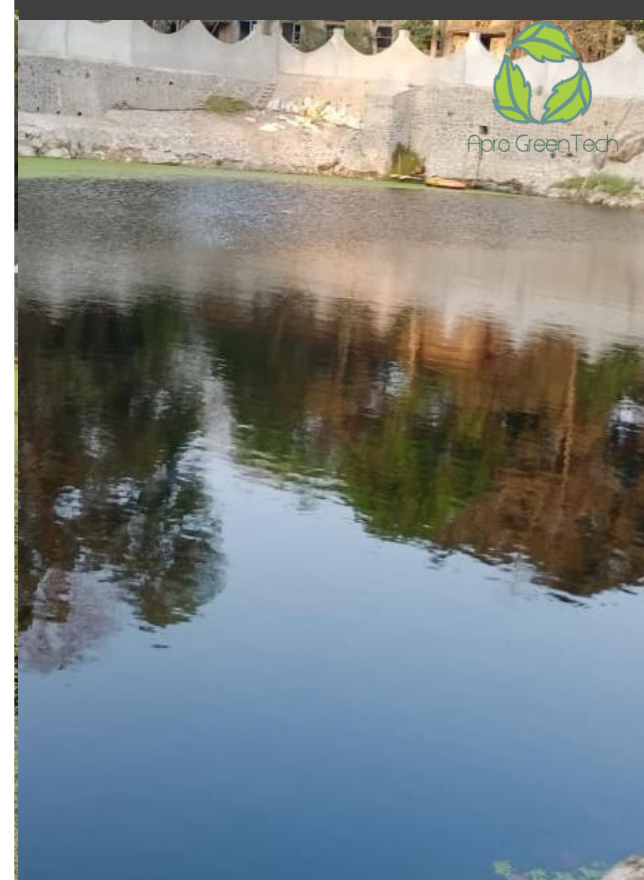
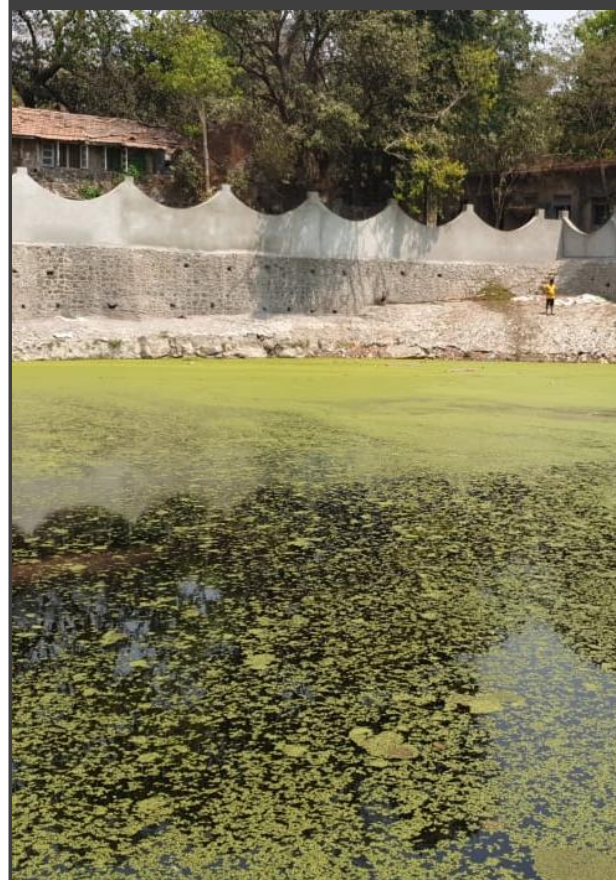


Water is undeniably one of the most vital substances on our planet. It is an absolute necessity for the survival of all plants and animals. Without water, life as we know it would simply cease to exist.

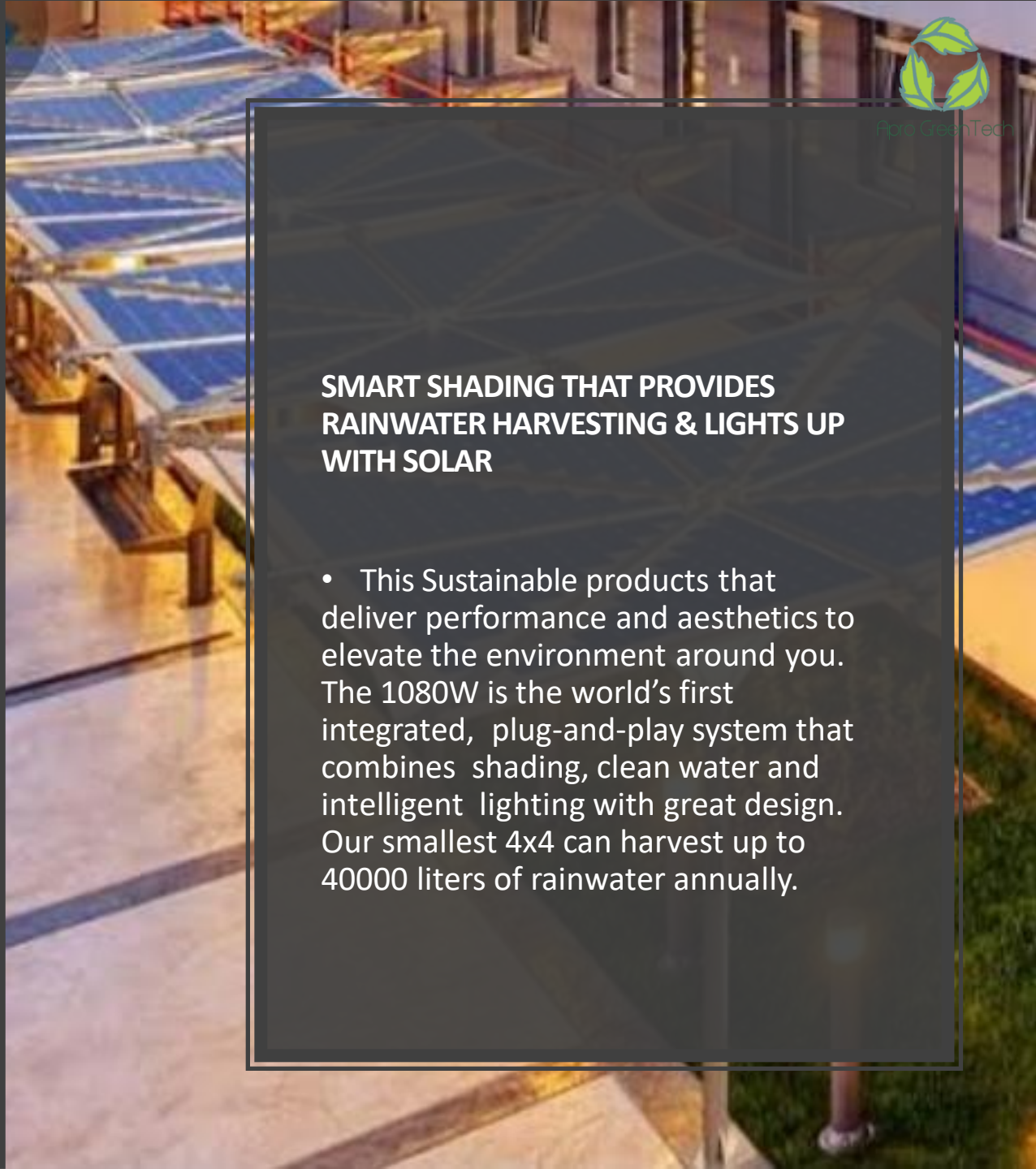
In the realm of water management and treatment, innovative solutions are playing a significant role:

Water Treatment with Bio Enzymes: This approach involves the use of bioremediation techniques and mechanical interventions to address polluted water bodies. It encompasses dewatering and sewage treatment, utilizing natural microorganisms to break down toxic and hazardous substances through both aerobic and anaerobic processes. This treatment method can be applied directly at the site or at off-site treatment plants, effectively restoring the quality of water resources.

Rainwater Harvesting: A pioneering development in this field is the creation of shade structures that incorporate rainwater harvesting and solar-powered lighting. These sustainable products not only enhance the environment but also offer exceptional performance and aesthetics. For instance, the 1080W system stands out as the world's first integrated and plug-and-play solution, combining shading, clean water collection, and intelligent lighting with a design that excels in both form and function. During the day, it provides essential shade, while at night, it illuminates the surroundings. Even the smallest 4x4 shade can harvest an impressive 40,000 liters of rainwater annually. This innovation represents a remarkable step towards an environmentally conscious and resource-efficient future.



Before & After pictures of water treatment with Bio Enzymes



SMART SHADING THAT PROVIDES RAINWATER HARVESTING & LIGHTS UP WITH SOLAR

- This Sustainable products that deliver performance and aesthetics to elevate the environment around you. The 1080W is the world's first integrated, plug-and-play system that combines shading, clean water and intelligent lighting with great design. Our smallest 4x4 can harvest up to 40000 liters of rainwater annually.



Solution providers for control of Air Pollution

AIR POLLUTION - THE SILENT KILLER

2

Every year, around
7 MILLION DEATHS
are due to exposure
from both outdoor
and household air
pollution.

Air pollution is a major environmental risk to health. By reducing air pollution levels, countries can reduce:



Stroke



Heart
disease



Lung cancer, and
both chronic and acute
respiratory diseases,
including asthma

REGIONAL ESTIMATES ACCORDING
TO WHO REGIONAL GROUPINGS:



- Over 2 million**
in South-East Asia Region
- Over 2 million**
in Western Pacific Region
- Nearly 1 million**
in Africa Region
- About 500 000**
deaths in Eastern Mediterranean Region
- About 500 000**
deaths in European Region
- More than 300 000**
in the Region of the Americas



Apro GreenTech

Health Impacts :

1.7 million deaths of children below the age of 5 years :WHO
Air pollution kills not only through lungs, but also through heart attack and brain stroke

Dignity Impacts

14 cities out of 15 most polluted cities of the world are in India:WHO

Revenue Impacts

India Loses \$560 because of air pollution including tourism, investment and disease Burden.

CLEAN AIR FOR HEALTH

#AirPollution



World Health
Organization

Innovations for Mitigation of Air Pollution & Dust

**Truck Mounted
Road Washer &
Sprinkler System**

**Vehicle Mounted
Misting Machine
(Mist Cannon)**

**Vehicle mounted
detachable Air
Purification Unit**

Truck Mounted Road Washer & Sprinkler System





Vehicle Mounted Misting Machine (Mist Cannon)



Portable Mist Cannon





Vehicle mounted detachable Air Purification Unit



Purpose of the vehicle mounted air purification unit is to convert all moving vehicles into air purifiers and defeat the menace that air pollution has become.

Vehicle Mounted Air Purifier is an air filter equipped with 3-stage filtration and 5 different pore size fiber and dust filtration foam layers that capture carbon particles PM 2.5 and PM 10 from the air when mounted on moving vehicles.

According to the tests conducted by IIT Delhi, while the vehicle mounted with the air purifier moves, it removes total suspended particulate matter in ambient air on non-foggy days in the range of 0.012 to 0.049 g/km. The removal is observed to be related to ambient PM_{2.5}/PM₁₀ concentrations. Vehicle mounted Air purifier is a silent and effective technology for the purification of air and making the environment clean.





Apro GreenTech

Waste Recycling

- Waste to Energy : Zero residue pyrolysis recycling plant
- Wet waste to compost : composting machine that converts wet waste to compost within 24 to 48 hours.



Apro GreenTech

Waste to Energy Plants use incineration of waste to provide some form of energy that is then used to create electricity and support grid power supplies.

Pyrolysis is currently recognized globally as one of the best processes for conversion of waste to hydrocarbons – where it is available in the form of reusable energy products.

Apro Greentech is an Indian Company providing Zero-Residue Waste Conversion Plants for complete conversion of un-segregated MSW, Bio-medical Waste, Industrial Wastes into :

Reusable Energy Products – The treated waste converts to the following:

- Liquid Fuel,
- Gas and
- Carbon Black (Smokeless Coal)
- No Residual ASH or post-process effluents
- Made in India Technology & it is proprietary.

Un-segregated Waste is present everywhere, especially in rural areas the open air burning of waste is well documented. Increase in pollution during the winter months is also recorded and documented in various reports of the Government organizations. The per-capita increase in non-biodegradable waste in MSW and Bio-Medical hazardous Waste post Covid-19 pandemic is also well documented.

BY-PRODUCTS READY
TO MARKET



3 BY-PRODUCTS
LIQUID BIO-FUEL
SYN-GAS
PET COKE (CARBON BLACK)

NO POST PROCESS WASTE /
EFFLUENT / ASH ETC.

UNSEGREGATED SOLID
MUNICIPAL / BIOMEDICAL
WASTE (INCLUDING
PLASTICS)



ERT WASTE
CONVERSION
PLANT



SCIENTIFIC PLASTIC RECYCLING UNIT AT JUHU.

- **PET & Plastic recycling machine set up at our facility in Juhu. We collect all sorts of dry waste at our facility and in turn we beautify your area by give away of bins made from recycled materials, benches & tree guards from recycled milk & juice cartons.**

With BMC commissioner Shri Ajoy Mehta & Juhu corporater Renu Hansraj at our juhu facility.



Apro GreenTech





Apro Greentech

World Environment Day

- On world environment day today Apro Greentech set up a **plastic recycling kiosk** @juhu beach, Mumbai. Along with company Corona, Sabmiller Abinbev. In support of the initiative MLA Amit Satam, Corporater Renu Hansraj, Actor Varun Dhavan & Milind Soman to at our Save The Beach event. Beat Plastic Pollution





Aqua Green Tech



plastic recycling kiosk @juhu beach, Mumbai.
Along with company Corona, Sabmiller
Abinbev. In support of the initiative MLA Amit
Satam, Corporater Renu Hansraj, Actor Varun
Dhavan & Milind Soman to at our Save The
Beach event. Beat Plastic Pollution



WET WASTE COMPOST MACHINE



- We help you manage your wet waste in an Efficient, Economical, Eco-Friendly and Easy manner.
- Fully equipped, ISO 9001 certified manufacturing facility in Navi Mumbai
- Qualified design team, quality controllers and electrical and mechanical engineers
- **24-48 hour Breakdown assistance across Mumbai**
- Customized solutions and installation and post installation support and training

Green Buildings : made from waste materials





“SUSLOO” E toilets Sustainable Loo

To reduce the carbon footprint of sanitation units across the Country. By creating a structure out of waste. using renewable energy & recycled products we become part of the solution to the environment crisis we face today. Improving public convenience. Reducing pollution which generated through sanitation. To create environmental/hygiene awareness.



- Available in permanent & portable option :
- Portable option made by recycling materials like juice carton/milk carton & composite roofing.
- Permeant option made from APRO’s Boom bottle brick technology. Made from waste Pet bottles.
- Power system- Off-grid solar power system, solar power electric fitting (LED & Exhaust Fans).
- Bio-toilets (optional)
- Dual flush system (optional).
- Eco-blocks (water free).
- Bio-cleaners (optional).
- water tap.
- Air purifying plant.
- VOC free paint.
- Advertising Space

Recycled Solar Benches

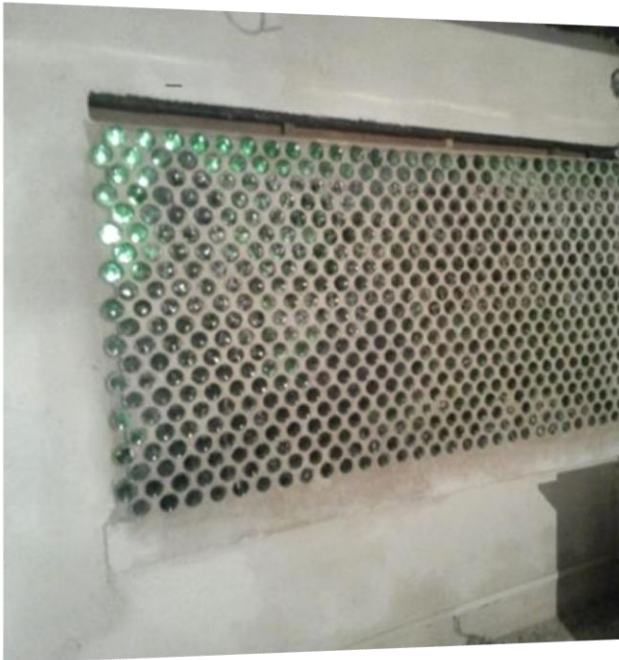
- Recycled milk & Juice carton benches powered with solar used as charging stations.
- Waste PET bottle bench : Every sustainable structure is made from Apro Boom pet bricks each weighing one kilograms, or nearly two pounds, once filled and packed the bottles are 20 times stronger than bricks. Apro Greentech in its endeavor of "Greening The Impossible" is bringing a fresh perspective to Green housing in India.



Apro Greentech



Apro GreenTech



Sustainable Construction – APRO Boom
Bottle Brick Tech.
Structure made from waste plastic
bottles



Eco Green Tech



PREFABRICATED SOLAR CLASSROOMS

Made from recycled milk and juice cartons & bottle bricks



ROADS FROM WASTE
Tires & Plastic

GREEN INNIATIVE / URBAN GREENING - TREE PLANTATION ACROSS INDIA



APRO GreenTech





Apro GreenTech

| Greening the Impossible |

www.aprogreentech.in

THANK
YOU